

 Revenues in the first semester 2014 considerably higher than in 2013

“The revenues in the first half year 2014 have ... in comparison to the revenues of the same period in the previous year.”

85,6% of all polled companies could generate in parts a clear **increase** in **revenues** in the first half year term in 2014 compared to the same period in the previous year

Only 4,8% of all polled companies had to accept a **decrease** in **revenues** compared to the previous year

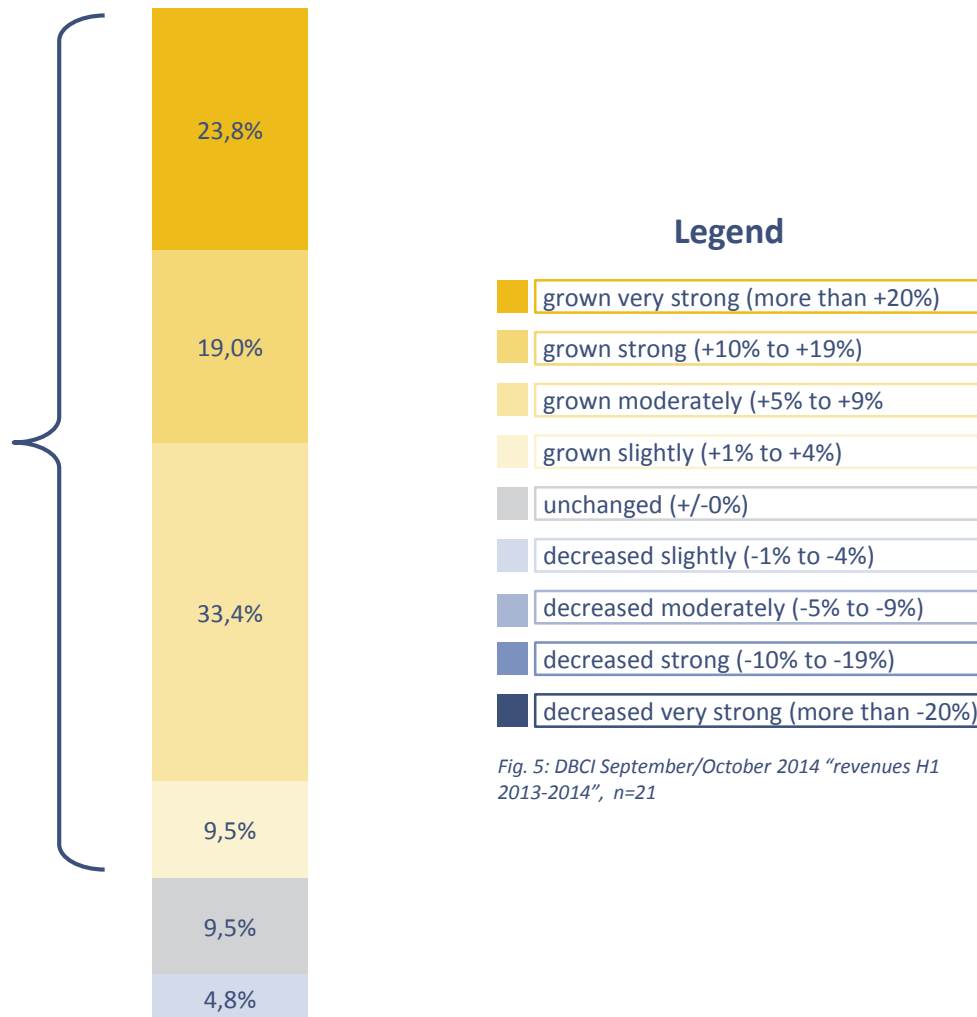


Fig. 5: DBCI September/October 2014 “revenues H1 2013-2014”, n=21